

ALBERT PRIMARY SCHOOL

YSGOL GYNRADD ALBERT

Belonging Together, Growing Together, Succeeding Together

10TH APRIL 2025

Celebrating Our Achievements: Estyn Interim Inspection

We are delighted to share the extremely positive outcome from our recent Estyn Interim Inspection, which commended our school for its commitment to addressing the recommendations from our Core Inspection in July 2023.

The dedication and hard work of our staff and stakeholders have been instrumental in this progress. This collaborative effort not only highlights our achievements but also reinforces our commitment to continuous improvement and delivering a high-quality educational experience for all our pupils.

During the Inspection our school had the privilege to showcase our teaching & learning and self-evaluation practices. The Interim Inspection Letter can be found overleaf and further information on the school on Estyn's website.

[Albert C.P. School - Estyn](#)

An extremely positive way to end the spring term.

Thank you for your ongoing support.

Albert Road : Pedestrian Improvements

Following the recent installation of the zebra crossing we have been informed that the Council have authorised further pedestrian improvements along Albert Road that will begin during the Easter Holidays to minimise disruption. Please be aware of this as works will continue into next half term on our return to school.



End of Term Dates

Friday 11th April - School closes for Easter Holidays

Monday 28th April - School re-opens for Summer Term 2025



This letter is also available in Welsh

Andrew Gilbert
Albert C.P. School
Albert Road
Penarth
CF64 1BX

02/04/2025

Dear Andrew Gilbert

Interim visit: March 2025

A team of inspectors recently visited Albert County Primary School to consider how the school has progressed in addressing two of the recommendations from the core inspection in July 2023. During the visit, the team had the opportunity to observe teaching and learning, speak to pupils and look at their work, and talk to staff and leaders.

Below is a summary of progress against these focus areas. Leaders may find it useful to use these findings to support further improvements.

Focus of visit

Improve teaching to ensure that all pupils develop strong independent, critical, creative, and problem-solving skills

- Since the core inspection, leaders have prioritised the development of pupils' independent, critical, creative and problem-solving skills. They provide worthwhile professional learning that supports staff to understand how to develop these skills for pupils across the school. The establishment of teaching triads has created a safe and supportive environment that develops the pedagogical skills of staff well. This leads to a consistency of approach in teaching and learning across the school.

Estyn, Llys Angor, Heol Keen, Caerdydd,
CF24 5JW Ffôn: 02920 446446
ymholiadau@estyn.llyw.cymru
www.estyn.llyw.cymru

Mae Estyn yn croesawu gohebiaeth yn Gymraeg a Saesneg. Bydd gohebiaeth a dderbynnir yn y naill iaith neu'r llall yn cael yr un flaenoriaeth.

Estyn, Anchor Court, Keen Road,
Cardiff, CF24 5JW Telephone: 02920
446446 enquiries@estyn.gov.wales
www.estyn.gov.wales

Estyn welcomes correspondence in both English and Welsh. Correspondence received in either language will be given equal priority.

- Across the younger pupils' classes, staff encourage pupils to develop as independent learners. Most pupils make choices about what and where they learn. They have access to authentic and purposeful outdoor learning environments that enable pupils to develop their independent and problem-solving skills successfully. In the classrooms, teachers provide useful help stations, such as the 'Hafan Help' areas, where pupils can self-assess their learning before asking an adult.
- In the older pupils' classes, pupils have developed a range of strategies to support them when they face challenges with their learning. Teachers provide resources that support pupils and develop their independent skills well, for instance a 'poetry toolbox' supports their creative writing. In general, pupils' first response, when they need help with their work is to apply their thinking skills or use additional strategies rather than asking an adult.
- Staff value pupils' views and ask them about what they would like to learn. At the start of each theme, staff ask pupils for suggestions to guide their learning activities. In many classes, pupils know that staff value their suggestions and that they will be acted on. Staff provide valuable opportunities for pupils to develop their independent thinking skills, for instance when pupils in Year 3 create and evaluate new events for their sports day.
- Across the school, staff make beneficial use of clear success criteria that build effectively on pupils' current knowledge and skills. These support pupils to understand what is expected of them and to peer and self-assess work effectively. In the most effective examples, staff co-construct success criteria with pupils. This strengthens pupils' ability to manage their own learning.

Strengthen self-evaluation processes and include staff and governors

- Following the core inspection school leaders have strengthened the school's capacity to evaluate its own performance. Working closely with staff and governors they have refined school processes and developed a robust monitoring and self-evaluation cycle. They have streamlined procedures to ensure that the information they receive from monitoring activities, enables staff to clearly identify any strengths and areas for improvement in classes and across the school.
- To increase leadership capacity and assist in creating a culture of self-reflection, the senior leadership team include other staff in focused monitoring activities. These include, learning walks, termly pupil progress meetings and listening to learner sessions. This work supports their professional development, refines their self-evaluation skills and leads to improvements in teaching approaches. Additionally, leaders provide many opportunities for pupils to voice their thoughts and opinions and influence change effectively.

- Governors' involvement in school self-evaluation has increased significantly in since the core inspection. School leaders provide governors with useful professional learning that supports them to understand what to look for when undertaking school visits. This includes providing useful prompt sheets to support their discussions with staff and pupils.
- All governors receive regular opportunities to be involved in gathering first hand evidence and evaluating the school's work. In addition, governors with specific responsibilities visit the school regularly, they work alongside school staff to support their understanding.
- Governors receive detailed headteacher reports, for example, about the school's progress against priorities for improvement and about pupil progress. They ask well informed questions about the work of the school and offer useful support and appropriate challenge to school leaders.

Overall, leaders are having a positive impact on addressing the recommendations and are keen to continue building on the progress they have already made for the benefit of their pupils.

The school's/PRU's latest core inspection report and further information on the process and purpose of interim visits can be found on our website:

<http://www.estyn.gov.wales/provider/6732109>

Yours sincerely



Liz Miles

Assistant Director

Families Learning Together

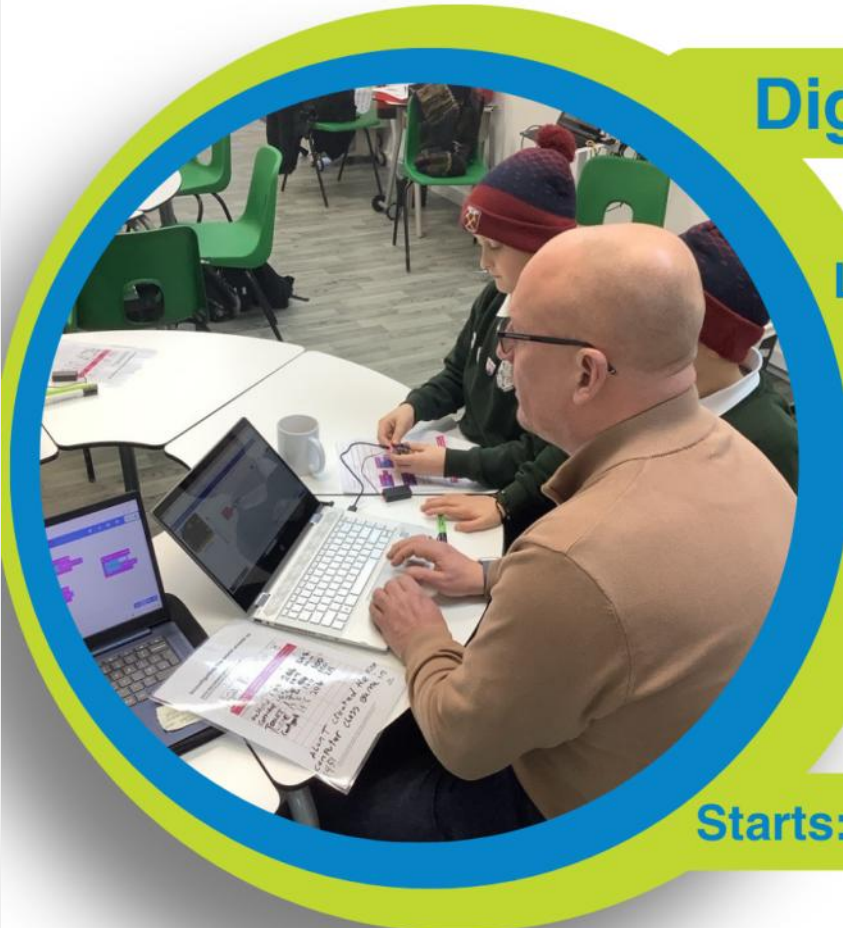
Digital Detectives

Location: Albert Primary

For family members of
y4, y5, y6 pupils

Time: 1:00pm - end
of school day

Starts: Tuesday 6th May 2025



Embark on a thrilling adventure to unlock the secrets of boosting your child's education right from your living room! In the coming weeks, we'll dive into fun ways to support your child's digital learning. We'll also engage in lots of amazing activities that will build your confidence in assisting with primary-level coding, programming, STEM and overall internet safety.

Contact us
families@cavc.ac.uk





The Doodle Spring Challenge

1st – 30th of April 2025

Earn a pin badge and certificate!

Between the 1st - 30th of April, Doodle are running two exciting woodland-themed Spring Challenges — the DoodleMaths Challenge and the DoodleEnglish Challenge!



Both Challenges are designed to encourage a few minutes of daily Doodling, keeping your child engaged in their learning and boosting their skills. Plus, they can earn exclusive rewards by taking part!

How to take part

1 Create and/or link your account

If you haven't already, create and/or link a parent account to your child's school account. To find out how to do this, see the reverse of this flyer or visit help.doodlelearning.com and search 'how to link account'.

2 Register for the Challenge

From the 1st of April, visit parents.doodlelearning.com and press Register next to your child's name for one or both Challenges.* The last day to register for and begin the Challenge is the 24th of April.

3 Doodle 'little and often'

Once you've registered, encourage your child to earn 450 stars (or 350 if they were born after August 2017) and use DoodleMaths and/or DoodleEnglish for 7 days* between the 1st - 30th of April.

*These 7 days don't need to be in a row. A day of use is defined as completing at least one exercise between 00:01 and 23:59.

4 Receive a pin badge and certificate!

Once they've reached their target, we'll send a pin badge to their school. This will arrive after the Challenge comes to an end. You can also claim a certificate for them by visiting parents.doodlelearning.com and pressing Download certificate before the 23rd of May.



Tag us and use the hashtag #DoodleSpringChallenge

For more information, please visit doodlelearning.com/challenge.

Any questions? Please visit help.doodlelearning.com and press on the green circle icon to chat to our team.

How to create and/or link a parent account to your child's school account

Creating a parent account is really important (and really easy!). By doing this, you'll be able to enter the Spring Challenge and claim your child's personalised certificate by visiting parents.doodlelearning.com, our online parent hub.



How to create and/or link a parent account via the Doodle apps

- 1 Log in to any of the Doodle apps using the username and password provided by your child's school. If you're not sure what these are, please contact your child's school rather than creating a new account for them.
- 2 From the Learning Zone, click on the arrow icon in the top left-hand corner of the screen.
- 3 Select Settings and press Parent details.
- 4 If you're new to Doodle, choose Create parent account. If you already have a Doodle account, click on Link existing account.
- 5 Enter your details to link your email address to your child's account.



How to create and/or link a parent account via the Parent Dashboard

- 1 Visit parents.doodlelearning.com
- 2 If you're new to Doodle, click on Create account and follow the instructions. After you've done this, log in to parents.doodlelearning.com. If you already have a parent account, log in to parents.doodlelearning.com.
- 3 Once you've logged in, hover over My account and select Child details.
- 4 Click on Link to my child's school account and enter the username and password provided by your child's school. If you're not sure what these are, please contact your child's school rather than creating a new account for them.



Good luck, and happy Doodling!

*The Challenge available will depend on your school's Doodle subscription. If you'd like to join both Challenges but your school does not subscribe to DoodleMaths or DoodleEnglish, a home subscription can be taken out in the subject you're not subscribed to. To receive 2 FREE weeks of a home subscription, please visit doodlelearning.com/challenge-sftr.

doodlelearning
By Discovery Education



EASTER HOLIDAYS AT THE MEMO

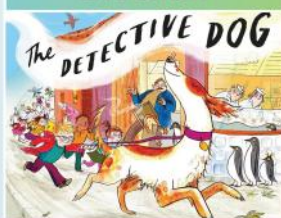
THE DETECTIVE DOG

25 April
11:30am & 2:30pm

£10 adult, £8 child



LIVE SHOW



CINEMA



DISNEY'S SNOW WHITE (PG)

11-23 April
Relaxed: Fri 11, 1pm
Captioned: Wed 16, 11am

£6, £5 concession

EASTER ACTIVITIES AT THE MEMO



The Memo is hosting an exciting array of workshops, activities and competitions this Easter holidays. There's lots to get involve with!

POI MAKING CIRCUS WORKSHOP

Make and learn how to use poi with Citrus Arts

15 April
Children: £7

WORKSHOP



ACTIVITY



MEMO'S EASTER EGG HUNT

This Easter, the Memo is hosting an egg hunt! Look out for eggs on your next visit for a chance to win fun prizes!